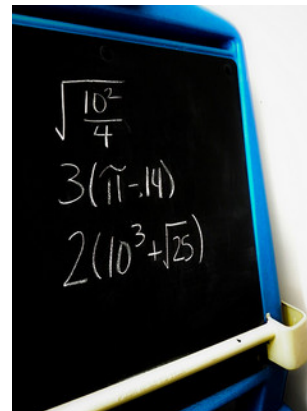


More Things Taken Out of Context

A Practice Understanding Task



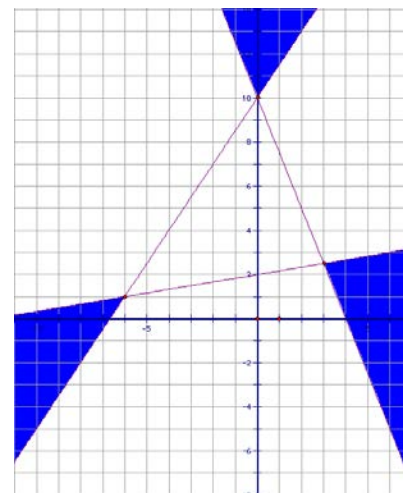
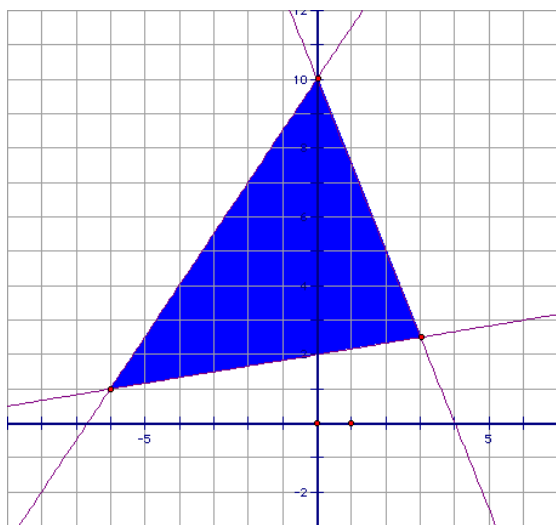
© 2012 www.flickr.com/photos/dolmansaxill

Solve the following systems of inequalities:

1.
$$\begin{cases} -5x + 3y \leq 45 \\ 2x + 3y > 24 \end{cases}$$

2.
$$\begin{cases} -10x + 6y \leq 90 \\ 6x + 9y > 36 \end{cases}$$

- Is the point $(-3, 10)$ a solution to the system in problem #1? Why or why not?
- How are the inequalities representing the boundaries of the solution sets in problems #1 and #2 similar to each other? What accounts for these similarities?
- Write the system of inequalities whose solution set is shown below:



- Amanda is examining Frank's work on #5, when she exclaims, "You have written all of your inequalities backwards. The solution set to your system would look like this."

What do you think about Amanda's statement?

