

READY, SET, GO!

Name

Period

Date

READY

Topic: Matching definitions of geometric figures.

Match the name of the figure with its geometric definition.

a. isosceles triangle	b. equilateral triangle	c. scalene triangle	d. right triangle
e. rectangle	f. rhombus	g. square	h. trapezoid

1. _____ A quadrilateral with only one pair of parallel sides.
2. _____ All of the sides of this triangle are the same length.
3. _____ All of the sides of this quadrilateral are the same length.
4. _____ This triangle has exactly one right angle.
5. _____ This quadrilateral has four right angles.
6. _____ None of the sides of this triangle are the same length.
7. _____ This quadrilateral is both #3 and #5.
8. _____ Only two sides of this triangle are the same length.

SET

Topic: Solving systems of equations by elimination

Solve each system of equations using *elimination of a variable*. Check your solution.

9.
$$\begin{cases} 2x + y = 3 \\ 2x + 2y = 2 \end{cases}$$

10.
$$\begin{cases} 2x + 5y = 3 \\ x + 5y = 6 \end{cases}$$

11.
$$\begin{cases} 2x + 0.5y = 3 \\ x + 2y = 8.5 \end{cases}$$

12.
$$\begin{cases} 3x + 5y = -1 \\ x + 2y = -1 \end{cases}$$

13.
$$\begin{cases} 3x + 5y = -3 \\ x + 2y = -\frac{4}{3} \end{cases}$$

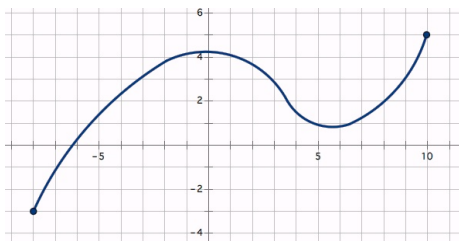
14. A 150-yard pipe is cut to provide drainage for two fields. If the length of one piece (a) is three yards less than twice the length of the second piece (b), what are the lengths of the two pieces?

GO

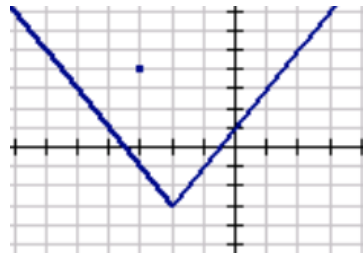
Topic: Identifying functions

For each graph determine if the relationship represents a function. If it is a function, write yes. If it is not a function, explain why it is not.

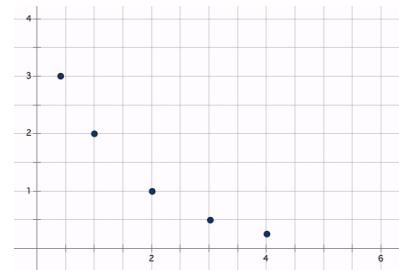
15.



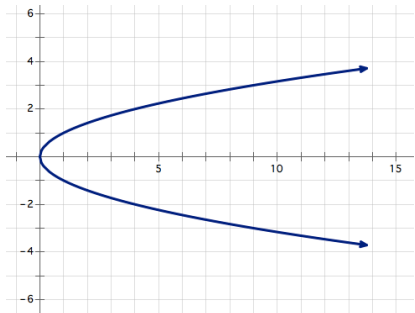
16.



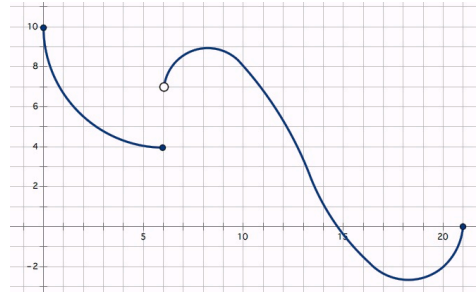
17.



18.



19.



20.

