

NAME:
Period:

Similarity & Right Triangle Trigonometry

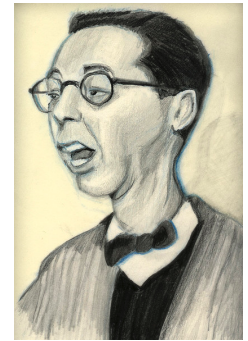
6.1

Ready, Set, Go!

Ready

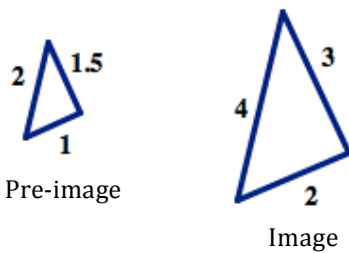
Topic: Scale factors for similar shapes.

Give the factor by which each pre-image was multiplied to create the image.
Use the scale factor to fill in any missing lengths.

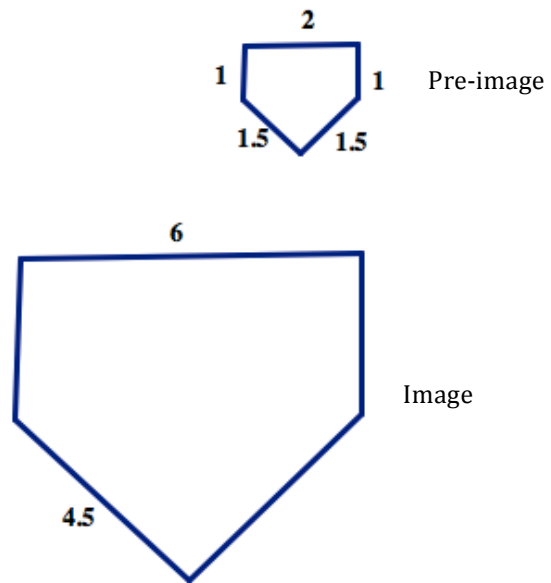


©2013 www.flickr.com/photos/anorwood

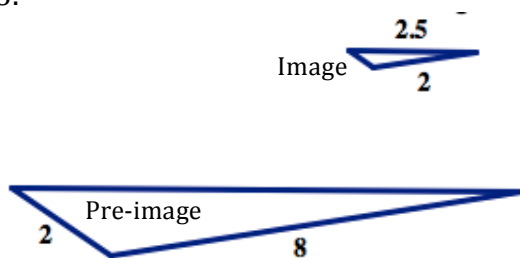
1.



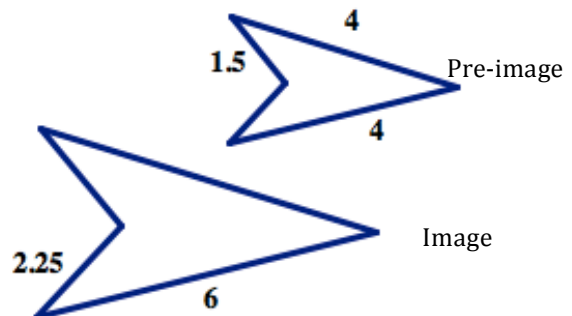
2.



3.



4.



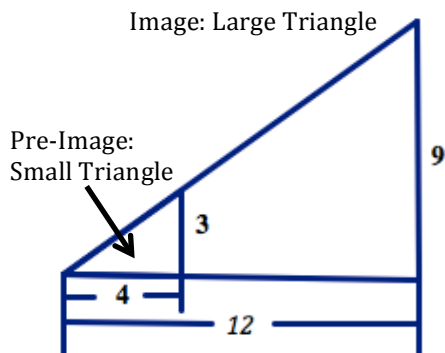
NAME:

Period:

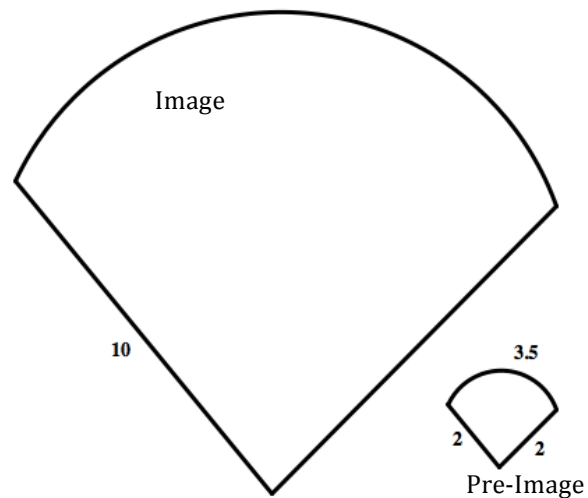
Similarity & Right Triangle Trigonometry

6.1

5.



6.



Set

Topic: Dilations in real world contexts

For each real-world context or circumstance determine the center of the dilation and the tool being used to do the dilation.

7.

Fran walks backward to a distance that will allow her family to all show up in the photo she is about to take.

8.

The theatre technician plays with the zoom in and out buttons in effort to fill the entire movie screen with the image.

9.

Melanie estimates the height of the waterfall by holding out her thumb and using it to see how many thumbs tall to the top of the waterfall from where she is standing. She then uses her thumb to see that a person at the base of the waterfall is half a thumb tall.

10.

A digital animator creates artistic works on her computer. She is currently doing an animation that has several telephone poles along a street that goes off into the distance.

11.

Ms. Sunshine is having her class do a project with a rubber-band tracing device that uses three rubber bands.

12.

A copy machine is set at 300% for making a photo copy.



NAME:

Similarity & Right Triangle

6.1

Period:

Trigonometry

Go

Topic: Rates of change related to linear, exponential and quadratic functions

Determine whether the given representation is representative of a linear, exponential or quadratic function, classify as such and justify your reasoning.

11.

X	Y
2	7
3	12
4	19
5	28

Type of function:

Justification:

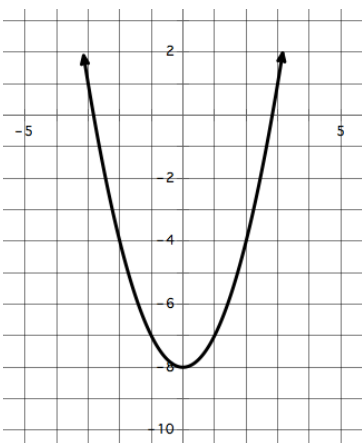
13.

$$y = 3x^2 + 3x$$

Type of function:

Justification:

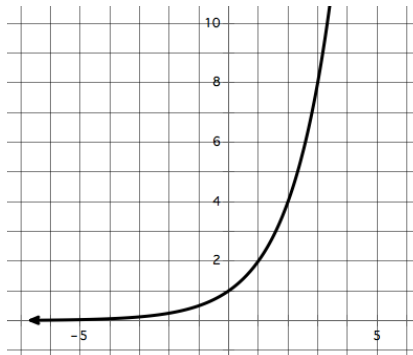
15.



Type of function:

Justification:

12.



Type of function:

Justification:

14.

$$y = 7x - 10$$

Type of function:

Justification:

16.

X	Y
2	-5
7	5
14	19
25	41

