

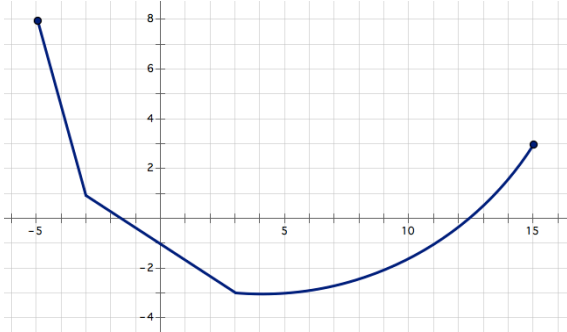
Name: _____

Period: _____

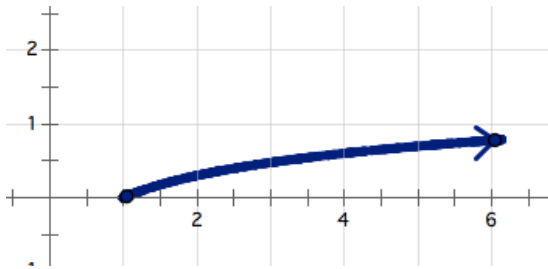
Mod 5 Review

List Key Features of the following functions:

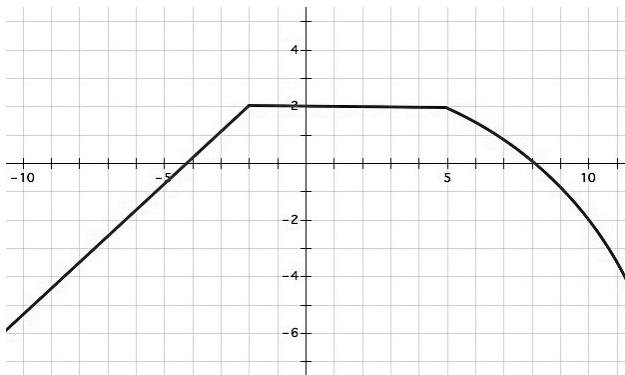
1.



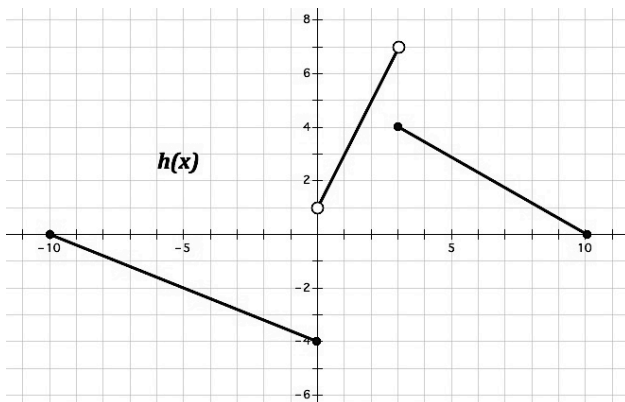
2.



3.



4.



5. What is the definition of a function?

6. Give an example of a function in the following representations:

(a) Table

(b) Ordered Pairs

(c) Map

(d) Graph

(e) Equation

7. Give an COUNTER EXAMPLE of a function in the following representations:

(a) Table

(b) Ordered Pairs

(c) Map

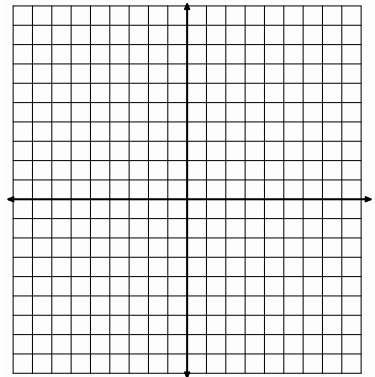
(d) Graph

(e) Equation

Given the descriptions below, sketch a possible graph of the function. There is more than one possible correct answer.

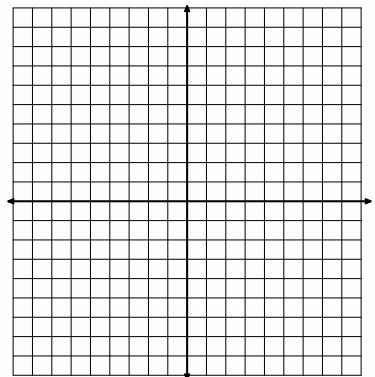
8.

- Domain contains all Real numbers between -2 and 3.
- Range contains all Real numbers between 3 and 7.
- The function is increasing from -2 to 0 and decreasing after 0.
- The function is not continuous at every point.



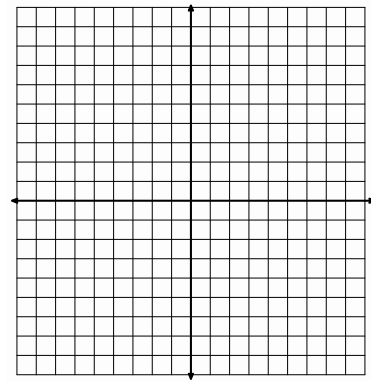
9.

- The function has a minimum at -5.
- The function has a maximum at 8.
- The function has two intervals on which it is decreasing and one interval on which it is increasing.
- The Domain of the functions contains all Real numbers from 1 to 9.



10.

- e. This function is not continuous anywhere.
- f. The function contains only seven elements in its domain.
- g. The values of the domain are between -10 and 2.
- h. The values of the range are between -1 and 1.



11. List the key features of a linear function

12. List the key features of an exponential function

13. List the similarities and differences between the key features of linear and exponential functions.